



# GAS CARTRIDGES & APPLIANCES

---

PRODUCT CATALOG

[www.maxsun.co.kr](http://www.maxsun.co.kr)

# GAS CARTRIDGES & APPLIANCES

Product Catalog



Beyond Safety & Convenience !



01 Factory [Asan, Korea] 02 Factory [Jin Cheon, Korea]  
03 Head Office [Seoul, Korea] 04 Factory [Dalian, China]  
05 Factory [Hai Phong, Vietnam]



**Seoul**

- Headquarter[Maxsun, DaeRyuk Co.,Ltd.]

**Asan**

- Gas Cartridge Factory[DaeRyuk Can Co.,Ltd.]

**Jincheon**

- Aerosol Cartridge Factory[GS Chem Co.,Ltd.]



**Dalian**

- China Head Office

Portable Gas Stove Factory[Maxsun Dalian Co.,Ltd.]

**Guangzhou**

- Guangzhou Sales Branch Office



**Hanoi**

- Vietnam Head Office [Daesun Vina]

**Hai Phong**

- Gas Cartridge Factory[Daesun Vina]

# Butane Gas Cartridge



## ■ Butane Gas Cartridge

### Mini Cartridge



|                       |                     |               |
|-----------------------|---------------------|---------------|
| Fuel Capacity(Weight) | 150g                |               |
| Volume                | 357ml               |               |
| Butane Gas            | Inner Packing       | 60pcs / box   |
|                       | Outer Box           | 441x374x315mm |
| Fuel Capacity(Weight) | Packing Information |               |
|                       | Outer Box           |               |
|                       | L x W x H           | CBM           |
| 150g                  | 441x374x315mm       | 0.052         |

| Classify | No. of units per container type |     |        |       |         |       |
|----------|---------------------------------|-----|--------|-------|---------|-------|
|          | 20FT                            |     | 40FT   |       | 40FT HC |       |
|          | Unit                            | Box | Unit   | Box   | Unit    | Box   |
| 150g     | 31,200                          | 520 | 63,000 | 1,050 | 73,800  | 1,230 |



### MSF-1 CRV, MSF-1A

|                       |               |                              |
|-----------------------|---------------|------------------------------|
| Fuel Capacity(Weight) | 220g(227g)    |                              |
| Volume                | 420ml         |                              |
| Packing               | Inner Packing | 4pcs / Shrink Film (4x1)     |
|                       | Outer Box     | 28pcs (4x7)<br>485x283x210mm |

| Packing Information | Outer Box     |       | No. of units per container type |       |        |       |         |       |
|---------------------|---------------|-------|---------------------------------|-------|--------|-------|---------|-------|
|                     | L x W x H     | CBM   | 20FT                            |       | 40FT   |       | 40FT HC |       |
|                     |               |       | Unit                            | Box   | Unit   | Box   | Unit    | Box   |
| Butane Gas          | 485x283x210mm | 0.028 | 28,224                          | 1,008 | 57,400 | 2,050 | 65,184  | 2,328 |

# Max CRV Butane Gas Cartridge



## CRV with Triple Seaming

### ● Benefit of Triple Seaming

Triple Seaming technology can prevent breakage and explosion by holding the top and body plate together until the CRV system activates and the residual gas is continuously discharged through 12 release vents.



## Explosion-Proof CRV System (Invention Patent No.10-0572517)



- **What is CRV(Countersink Release Vent)?**  
When excessive pressure is supplied into the butane gas cartridge, CRV system releases gas from dot-shaped explosion proof vents in the countersink at the top of the can.
- **Max CRV Butane Gas Cartridge is used worldwide in over 65 countries.**
- **Max CRV does not leave the butane residual even in wintertime.**  
You can save energy cost since Max CRV compounded with the high quality liquied gas, helps a complete combustion in stove and keeps a steady strong heat power until the cartridge is completely empty.
- **Explosion-proof, CRV system is very popular with all over the world as well as domestic market.**

**Max CRV Butane Gas Cartridge, Your only choice for high product quality, user safety and energy saving.**

# Camping Gas Cartridge

- Iso-Butane Cartridge



MSF-2 MSF-3 MSF-7  
MSF-4(EU) MSF-8(EU) MSF-9(EU)

No. of units per container type

|                       | 100g (110g)  | 230g          | 450g          | Model              | 20FT   |       | 40FT   |       | 40FT HC |       |
|-----------------------|--|---------------|---------------|--------------------|--------|-------|--------|-------|---------|-------|
|                       |  |               |               |                    | Unit   | Box   | Unit   | Box   | Unit    | Box   |
| Fuel Capacity(weight) | 100g (110g)  | 230g          | 450g          |                    |        |       |        |       |         |       |
| Volume                | 321ml  | 509ml         | 990ml         |                    |        |       |        |       |         |       |
| Packing(per box)      | 24pcs (3x4x2)  | 24pcs (3x4x2) | 12pcs (3x4)   | MSF-2 / MSF-4 (EU) | 31,992 | 1,333 | 63,984 | 2,666 | 84,552  | 3,523 |
|                       | 383x289x150mm  | 450x340x170mm | 450x340x170mm | MSF-3 / MSF-8 (EU) | 25,824 | 1,076 | 51,672 | 2,153 | 56,880  | 2,370 |
| Features              | Compatible with screw connector type camping devices |               |               | MSF-7 / MSF-9 (EU) | 12,912 | 1,076 | 25,836 | 2,153 | 28,440  | 2,370 |

# Lighter & Torch Gas Cartridge



## ▪ Lighter Gas Cartridge



MSF-135/150/165/180/300/460

|                       |                                     |
|-----------------------|-------------------------------------|
| Fuel Capacity(weight) | 135g/150g/165g/180g/300g/460g       |
| Volume                | 291ml/336ml/397ml/397ml/663ml/990ml |

| Model     | MSF-135       | MSF-150       | MSF-165       | MSF-180       | MSF-300       | MSF-460       |
|-----------|---------------|---------------|---------------|---------------|---------------|---------------|
| Inner Box | 12pcs (2x6)   | 12pcs (3x4)   | 12pcs (3x4)   | 12pcs (3x4)   | 12pcs (3x4)   | 6pcs (2x3)    |
|           | 327x113x185mm | 220x165x210mm | 213x161x240mm | 213x161x240mm | 245x185x289mm | 205x239x355mm |
| Outer Box | 48pcs (12x4)  | 48pcs (12x4)  | 96pcs (12x8)  | 96pcs (12x8)  | 48pcs (12x4)  | 24pcs (6x4)   |
|           | 665x240x200mm | 455x345x225mm | 447x345x507mm | 447x345x507mm | 510x390x308mm | 425x295x370mm |



## ▪ Torch Gas Cartridge

MSF-T

|                       |  |               |
|-----------------------|--|---------------|
| Fuel Capacity(weight) | 300 g / 330 g                              |               |
| Diameter              | ø211N                                      |               |
| Volume                | 600ml                                      |               |
| Packing               | Outer Box                                  | 30pcs / box   |
|                       |  | 420x350x275mm |
| Features              | Compatible with screw connector type torch |               |

# Portable Gas Stove

## ▪ Portable Gas Stove

### MINI-A (Latte series)

#### TECHNICAL CHARACTERISTICS (at 20 °C+/-5 °C)

|                      |                      |
|----------------------|----------------------|
| Nominal Heat Input   | 2.1kW                |
| Gas consumption      | 150g/h               |
| Cartridge to be used | MSF-1a & MSF-1 (CRV) |
| Gas Type             | Butane               |



### MINI STOVE MS-8000

#### TECHNICAL CHARACTERISTICS (at 20 °C+/-5 °C)

|                      |                      |
|----------------------|----------------------|
| Nominal Heat Input   | 2.1kW                |
| Gas consumption      | 150g/h               |
| Cartridge to be used | MSF-1a & MSF-1 (CRV) |
| Gas Type             | Butane               |



### UNIVERSAL STOVE MS-2500

#### TECHNICAL CHARACTERISTICS (at 20 °C+/-5 °C)

|                      |                      |
|----------------------|----------------------|
| Nominal Heat Input   | 2.2kW                |
| Gas consumption      | 160g/h               |
| Cartridge to be used | MSF-1a & MSF-1 (CRV) |
| Gas Type             | Butane               |



### ULTRA SLIM STOVE MS-3500 / MS-3500S

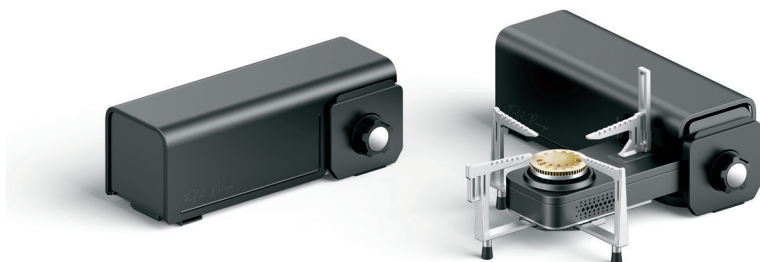
#### TECHNICAL CHARACTERISTICS (at 20 °C+/-5 °C)

|                      |                      |
|----------------------|----------------------|
| Nominal Heat Input   | 2.9kW                |
| Gas consumption      | 200g/h               |
| Cartridge to be used | MSF-1a & MSF-1 (CRV) |
| Gas Type             | Butane               |





## Portable Gas Stove



### MS-100

#### TECHNICAL CHARACTERISTICS (at 20 °C +/- 5 °C)

|                      |                      |
|----------------------|----------------------|
| Nominal Heat Input   | 2.2kW                |
| Gas consumption      | 160g/h               |
| Cartridge to be used | MSF-1a & MSF-1 (CRV) |
| Gas Type             | Butane               |



### CAMPING STOVE MS-200

#### TECHNICAL CHARACTERISTICS (at 20 °C +/- 5 °C)

|                      |                        |
|----------------------|------------------------|
| Nominal Heat Input   | 2.4kW                  |
| Gas consumption      | 175g/h                 |
| Cartridge to be used | MSF-1 & MSF-8 & MSF-9  |
| Gas Type             | Butane-propane mixture |



### DOUBLE BURNER STOVE MSD-5800S

#### TECHNICAL CHARACTERISTICS (at 20 °C +/- 5 °C)

|                      |                      |
|----------------------|----------------------|
| Nominal Heat Input   | 2.2kW x 2            |
| Gas consumption      | 160g/h x 2           |
| Cartridge to be used | MSF-1a & MSF-1 (CRV) |
| Gas Type             | Butane               |



### DEEP GRILL PAN STOVE MS-8

#### TECHNICAL CHARACTERISTICS (at 20 °C +/- 5 °C)

|                      |                      |
|----------------------|----------------------|
| Nominal Heat Input   | 2.2kW                |
| Gas consumption      | 160g/h               |
| Cartridge to be used | MSF-1a & MSF-1 (CRV) |
| Gas Type             | Butane               |

# Power Plate Stove and Camping Stove



## Power Plate Stove

|          |                        |
|----------|------------------------|
| Size     | 360 x 250 x 135mm      |
| Power    | 2,800kcal(3.2kW)       |
| Gas Type | Butane-propane mixture |
| N.W      | 2.2kg                  |



## Stainless Burner

|          |                        |
|----------|------------------------|
| Size     | 225 x 225 x 115mm      |
| Power    | 2,100kcal(2.4kW)       |
| Gas Type | Butane-propane mixture |
| N.W      | 460g                   |



## Ceramic Burner

|          |                        |
|----------|------------------------|
| Size     | 225 x 225 x 115mm      |
| Power    | 2,100kcal(2.4kW)       |
| Gas Type | Butane-propane mixture |
| N.W      | 460g                   |



## Twin Burner

|          |                        |
|----------|------------------------|
| Size     | 490 x 225 x 115mm      |
| Power    | 2,448kcal(2.8kW)       |
| Gas Type | Butane-propane mixture |
| N.W      | 2.6kg                  |

# Gas Heater



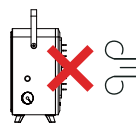
## Max Gas Heater

|                |                        |
|----------------|------------------------|
| Size           | 205 x 165 x 330mm      |
| Power          | 1,680kcal(1.9kW)       |
| Gas Type       | Butane                 |
| N.W            | 3.0kg                  |
| Color          | Khaki / Beige          |
| Material       | Steel & powder coating |
| Q'ty/Outer Box | 4 pcs                  |
| Outer Box Size | 560 x 560 x 400mm      |
| G.W            | 13kg                   |

Five safety features, prioritizing both user safety and convenience



ODS safety device



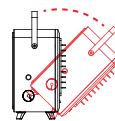
Flame Failure Safety Device



Overpressure cut-off device



Child Safety Lock



Safety tilt switch

# Gas Torch

## Basic Torch



MGT-102

MGT-107

MGT-301

## Premium Torch (Anti-Flare)

**Anti-Flare Technology**

Anti-Flare Technology prevents flare emission by keeping the flare steady, regardless of the angle of the torch.

Without Anti-Flare Technology, the torch will throw flame when the torch is hold upside down.



MGT-401

MGT-206

MGT-207

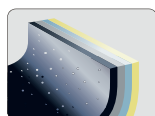
## Technical Characteristics

| Model           | Basic Torch                         |             |             |
|-----------------|-------------------------------------|-------------|-------------|
|                 | MGT-102                             | MGT-107     | MGT-301     |
| Size            | 155x75x45mm                         | 175x60x45mm | 175x65x40mm |
| Weight          | 150g                                | 139g        | 90g         |
| Gas Consumption | 125g/h                              | 153g/h      | 143g/h      |
| Heat Output     | 1.7kW                               | 2.1kW       | 1.26kW      |
| Ignition        | Piezo Electric / Automatic Ignition |             |             |
| Anti-Flaring    | N/A                                 |             |             |

| Model           | Premium Torch (Anti - Flare)        |             |             |
|-----------------|-------------------------------------|-------------|-------------|
|                 | MGT-401                             | MGT-206     | MGT-207     |
| Size            | 190x65x40mm                         | 155x75x40mm | 174x64x45mm |
| Weight          | 148g                                | 160g        | 163g        |
| Gas Consumption | 109g/h                              | 125g/h      | 109g/h      |
| Heat Output     | 1.52kW                              | 1.7kW       | 1.5kW       |
| Ignition        | Piezo Electric / Automatic Ignition |             |             |
| Anti-Flaring    | Anti-flaring safety device equipped |             |             |

# Grill Pan

## Strong Points



**4Layered Non Stick Coating**  
Quadruple fluorine resin coating extends the product durability



**Automatic Oil Discharge**  
Let the fat oil drain out automatically through oil outlet with multi bolt open

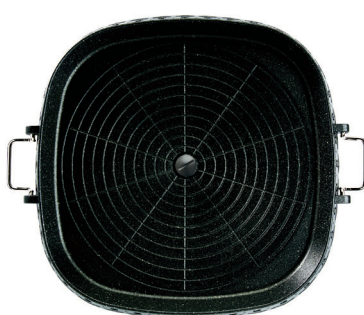


**Multi Purpose Cooking**  
When using the pan as a grill pan, keep the multi-bolt open.  
When using the pan as a stew pot, keep the multi-bolt closed.

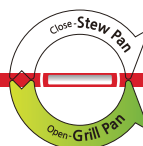
Round Grill Pan



Square Grill Pan



Joyme Round Grill Pan



Joyme Square Grill Pan



Super Multi Grill Pan



Egg Grill Pan



## Technical Characteristics

| Model          | Round             | Square            | Joyme Round       | Joyme Square      | Super Multi       | Egg Multi Pan     |
|----------------|-------------------|-------------------|-------------------|-------------------|-------------------|-------------------|
| Size           | Ø320mm            | 320 x 320mm       | Ø320mm            | 320 x 320mm       | Ø340mm            | Ø375mm            |
| Q'ty/Outer Box | 10pcs             | 10pcs             | 10pcs             | 10pcs             | 10pcs             | 10pcs             |
| Outer Box Size | 632 x 312 x 328mm | 592 x 336 x 314mm | 695 x 360 x 375mm | 650 x 407 x 375mm | 615 x 362 x 375mm | 535 x 387 x 390mm |
| G.W            | 16.6kg            | 18kg              | 16.7kg            | 16.7kg            | 17.5kg            | 16.58kg           |

# Paraffin Lamp Oil



## 1 Gal Type



## 32 oz Type



## 300ml Type



## Guide



Place a dedicated holder or a heat-resistant container (recommended diameter of 5cm or more) on a flat and secure surface. Pour the desired amount of water candles into the container.



Trim the wick with scissors to expose about 2cm of the dedicated wick from the water's surface.



Apply the dedicated wick to the center of the container, stand it upright, and use a lighter to ignite the flame.

# Other Products

## Accessories



Spray Ignition Agent



All Care Coating Spray



Outdoor Air Fresh Spray



Gas Warmer

## Car Care Product



Car Deodorizing Spray

## Industrial Product



Lubricant Spray

## Household Product



Insecticide

## Party Product



Snow Spray

## Sanitary Product



Sanitizer (Gel Type)



**Head Office [Seoul, Korea] : 2nd Fl., Korean Women Entrepreneurs Asso. Bldg.,**

221, Yeoksam-ro, Gangnam-ku, Seoul, Korea

Tel: +82.2.6003.0727 Fax: +82.2.563.3459

**Factory [Asan, Korea] : 17, 202 Bun gil, Yeongin-ro, Yeongin-myeon, Asan-si, Chungnam, Korea**

Tel: +82.41.540.3300 Fax: +82.41.540.3327

**Factory [Jin Cheon, Korea] : 89, Sincheoksandan 5-ro, Sincheok-ri, Deoksan-myeon, Jinchon-gun, Chungbuk, Korea**

Tel: +82.43.753.7200 Fax: +82.43.753.7201

**Factory [Dalian, China] : No.125 Bayi Road Jinzhou New Area, Dalian, 116100 China**

Tel: +86.411.87858555 Fax: +86.411.8785.8558

**Factory [Hai Phong, Vietnam] : Lot No CN5.1B, Dinh Vu Industrial Zone, Hai Phong, Vietnam**

Tel: +84.313.769.123 Fax: +84.313.769.345

